

FAMILY SEARCH CAMPAIGNS AND BYU FAMILY HISTORY PROJECTS



Presented by Jerroleen Sorensen
BYU Library Family History Center

Introduction

FamilySearch and BYU both have project teams that work on online projects to further interest in family history work and family wellbeing.

All of the FamilySearch projects and many of the BYU projects are of interest to genealogists, both amateur and serious.

New campaigns and projects are being developed and introduced often.





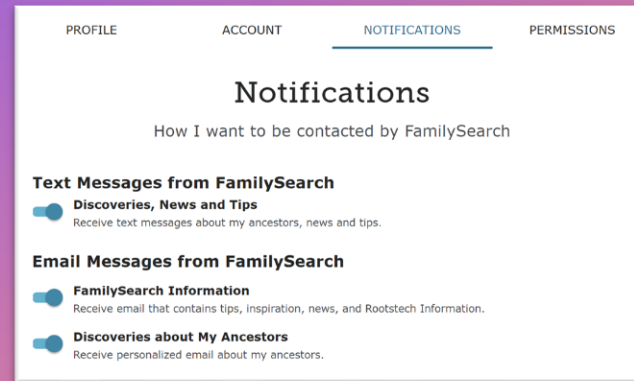
FAMILYSEARCH CAMPAIGNS

What is a FamilySearch campaign?

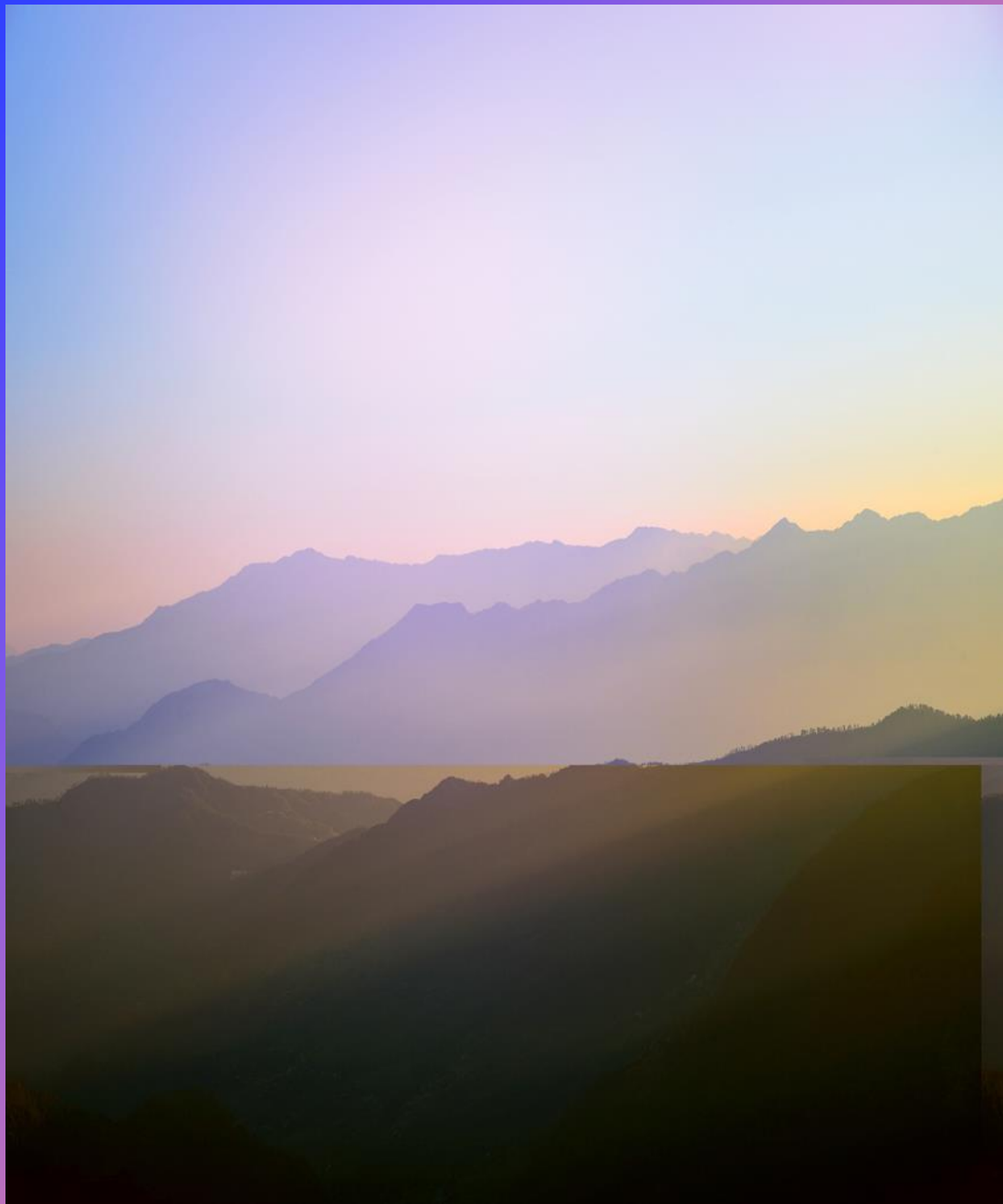
- Projects centered around Family History experiences and activities
- Designed to be fun, informative, educational or useful
- Great for family activities, youth groups, browsing
- They “come and go,” that is, some are permanent others are not.

HOW DO I FIND THE CAMPAIGNS?

- The easiest way: Search *All Campaigns FamilySearch* on your browser.
- Type in the url: <https://www.familysearch.org/do/campaign/list>
- Allow FamilySearch email or text notifications in your account notifications section. Click the Notifications bell (by your name upper-right corner) and look under *Discoveries*.



- Go to the help article, "Find past FamilySearch campaign messages or notifications." The url is: <https://www.familysearch.org/en/help/helpcenter/article/how-do-i-find-a-past-campaign-message-or-notification-from-familysearch>
- Go to this page: <https://www.familysearch.org/discovery/>. This page is a partial list.



How can I use the campaigns?

1. For family fun activities about family history, e.g., pioneers, ancestor stories, quizzes, photos, memories, historical context.
2. To learn more about family members in different and difficult times. Find ancestors' events, accomplishment, associations and milestones.
3. Prompts for 5-15 minute family history.
4. Find ancestral obituaries, cemeteries and headstones.
5. Find other family members who are working on your family (contributors).
6. Find hints to attach).
7. Find relatives in the Joseph Smith papers.
8. Find Mayflower relatives.
9. Find military ancestors and records.
10. Find the newest attached memories.
11. Discover and create "ofrendas."
12. Find FamilySearch opportunities and temple ordinances for yourself and members of your ward (LDS members).
13. Find religious information and records.
14. Find immigration information and stories.
15. Discover how friends are related to you.
16. Create family tree keepsakes.

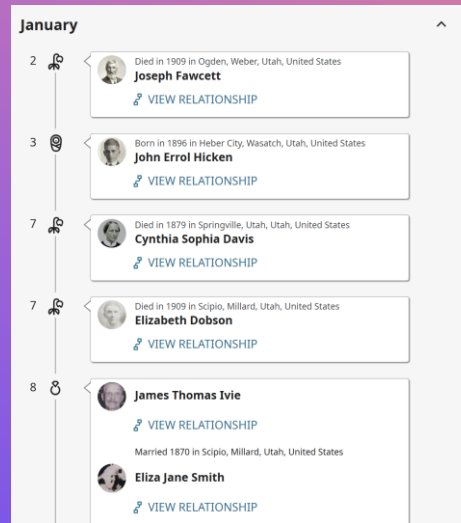


FAMILY SEARCH CAMPAIGNS AND BYU FH PROJECTS

SOME HIGHLIGHTS



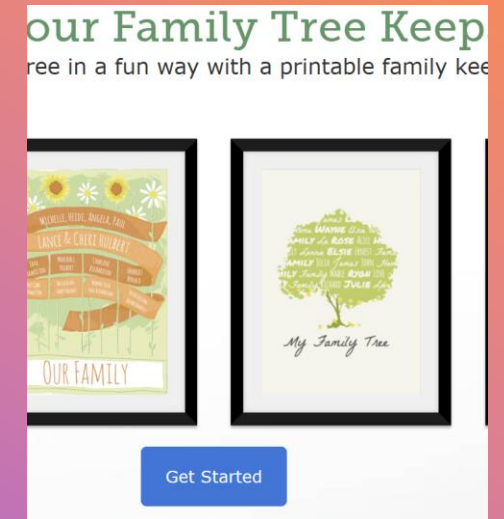
1950 Census



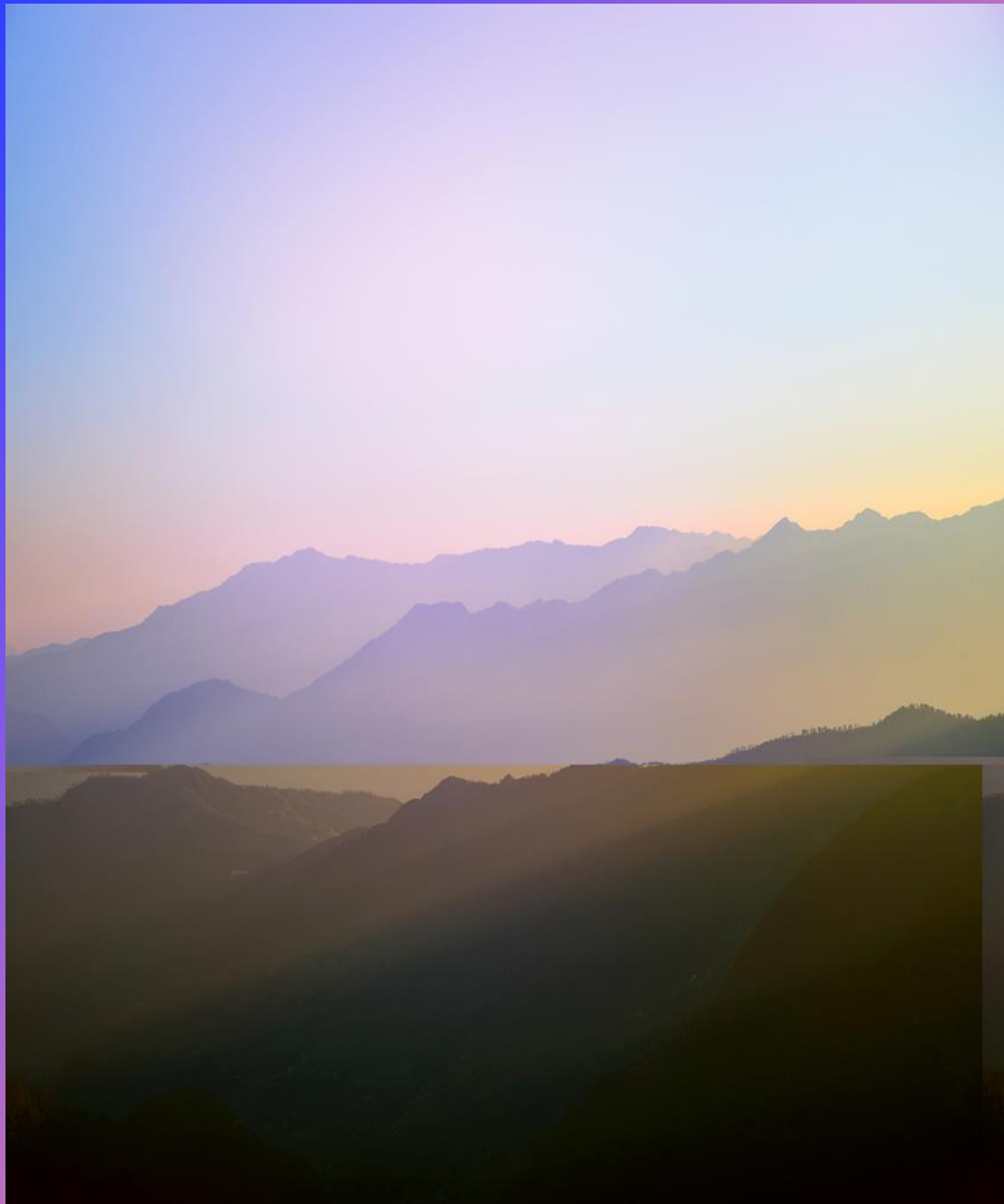
Ancestor Calendar



Challenging Times



Family Tree Keepsakes



BYU Record Linking Lab Projects

“A major goal for our lab is to make it possible for everyone to discover their family. We do this by linking records, extracting text from historical images, and creating discovery experiences. Since we work closely with college students and youth, we want to make it easier to do family history on a mobile device.”

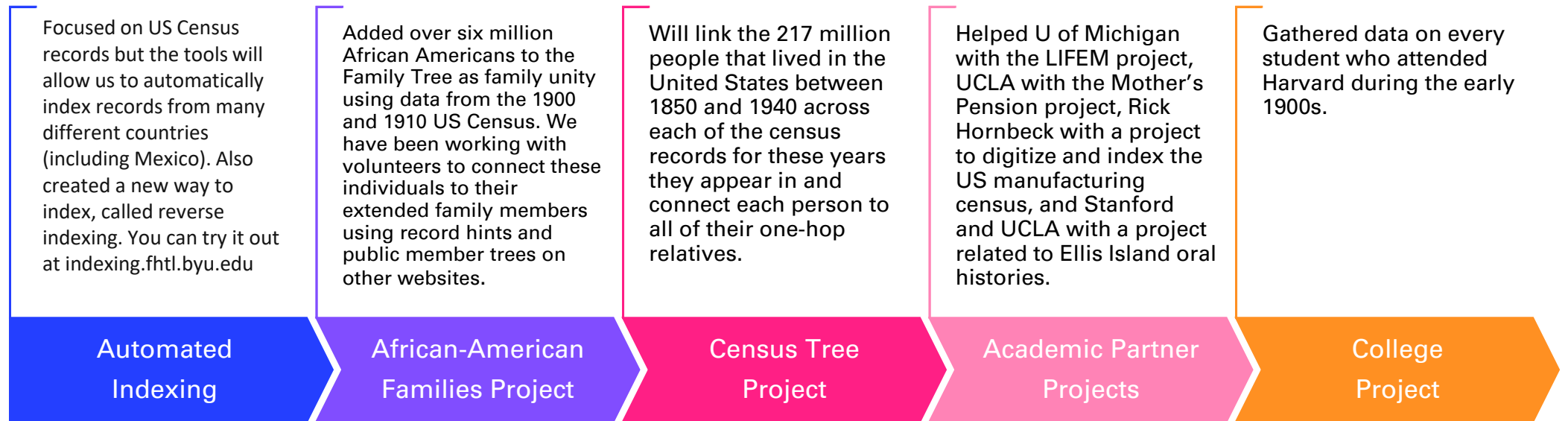
Facebook page:

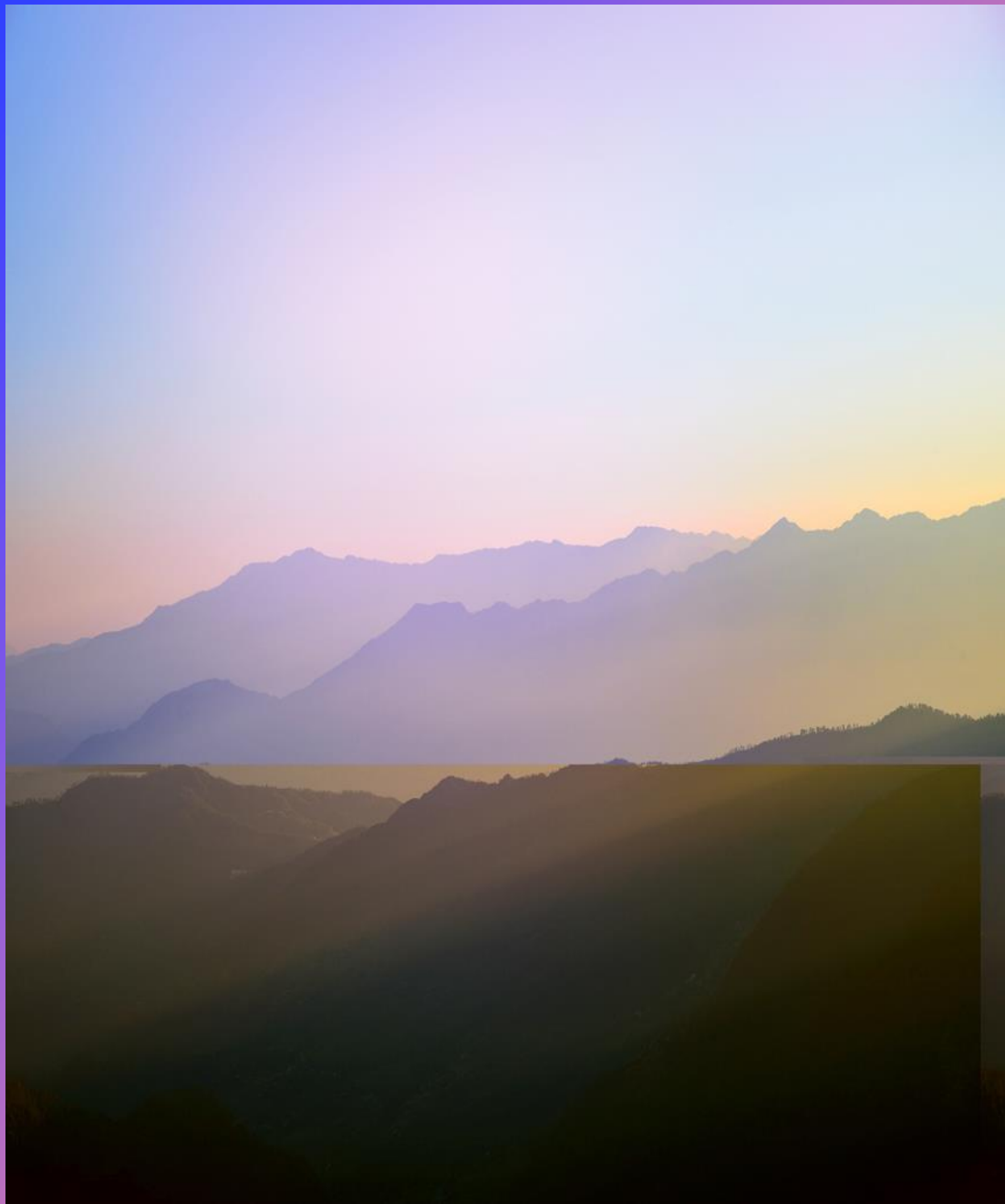
<https://www.facebook.com/BYUrecordlinkinglab/>

Donate: Your donation to the BYU Record Linking Lab will have a triple impact. First, all of the money you will donate will be spent directly on undergraduate research assistants at BYU, providing them an excellent mentored research experience. Second, all of the work they do will directly result in additions and improvements to the Family Tree at FamilySearch. Third, in many cases, your donation can often open the door for future funding to expand the project even more.

<https://record-linking-lab.byu.edu/>

Projects at the BYU Record Linking Lab





Video Projects



Volunteers Needed

<https://record-linking-lab.byu.edu/projects>

Click on Volunteer

Tasks

- **Tree Growth Projects**

-

- **Task #1: 1913 Cohort Study (New!)**

- [The goal of this project is to ensure that everyone in the 1920 census that was born in 1913 is on the Family Tree. This project will add about 650,000 people to the Family Tree, all of whom can have their temple work done by relatives. The google sheet includes record hints for families in the 1920 census that have a child who was born in 1913. The hint button is one of our tools that serves up a hint for this project each time you hit the button (this works great on a phone).]

-

- **Task #2: Numident Add Family Project**

- [The Numident is an amazing new record collection on FamilySearch that is based on records from the Social Security Administration. We are adding families from this record to the Family Tree. We are focused on African American families and families in Puerto Rico.]

-

- **Task #3: Converting Yellow Temples to Green Temples**

- [We have identified profiles that have a yellow temple icon because of incomplete birth information, standardization issues, or invalid characters. We just created a new sheet with people from Puerto Rico. There are tabs for medium, easy, and random. Feel free to do other things to help clean up the profile for the individual. The Census Hints sheet includes those yellow temples that have a record hints for a census record.]

- **Task #4: Puerto Rico Connection Project**

- [We also have created a set of different tasks (easy, medium, and hard) that will help create a fully connected Family Tree for Puerto Rico. Our work on this project will allow people to find their family in Puerto Rico and see their connection with each other.]

-

- **Task #5: Merge Duplicates**

- [We have an automated tool that adds families from US census records to the Family Tree. We only add families if no one in the family has a possible match to Family Tree, based on match files we get from FamilySearch. Sometimes after adding the family, possible duplicates appear. This task will help resolve those duplicates. The State sheet allows you to access duplicates by state of birth.]

-

- **Task #6: Census Project for Former Slaves**

- [The goal of this project is to ensure that all Black individuals in the 1870-1940 census that were born before 1865 are on the Family Tree. We also plan to connect the descendants of these individuals to the 1940 census. This will allow people who have a Black ancestor in the 1940 census to follow the tree back to find an ancestor who had been enslaved.]

-

- **Task #7: Use Record Hints to Grow the Family Tree**

- Two options for working on this project.
 - (1) Map App: (2) Goldie May:

FAMILY SEARCH CAMPAIGNS
AND BYU FH PROJECTS

+



o



.



**CHECK OUT
THESE GREAT
ACTIVITIES AND
PROJECTS!**

THANK YOU!